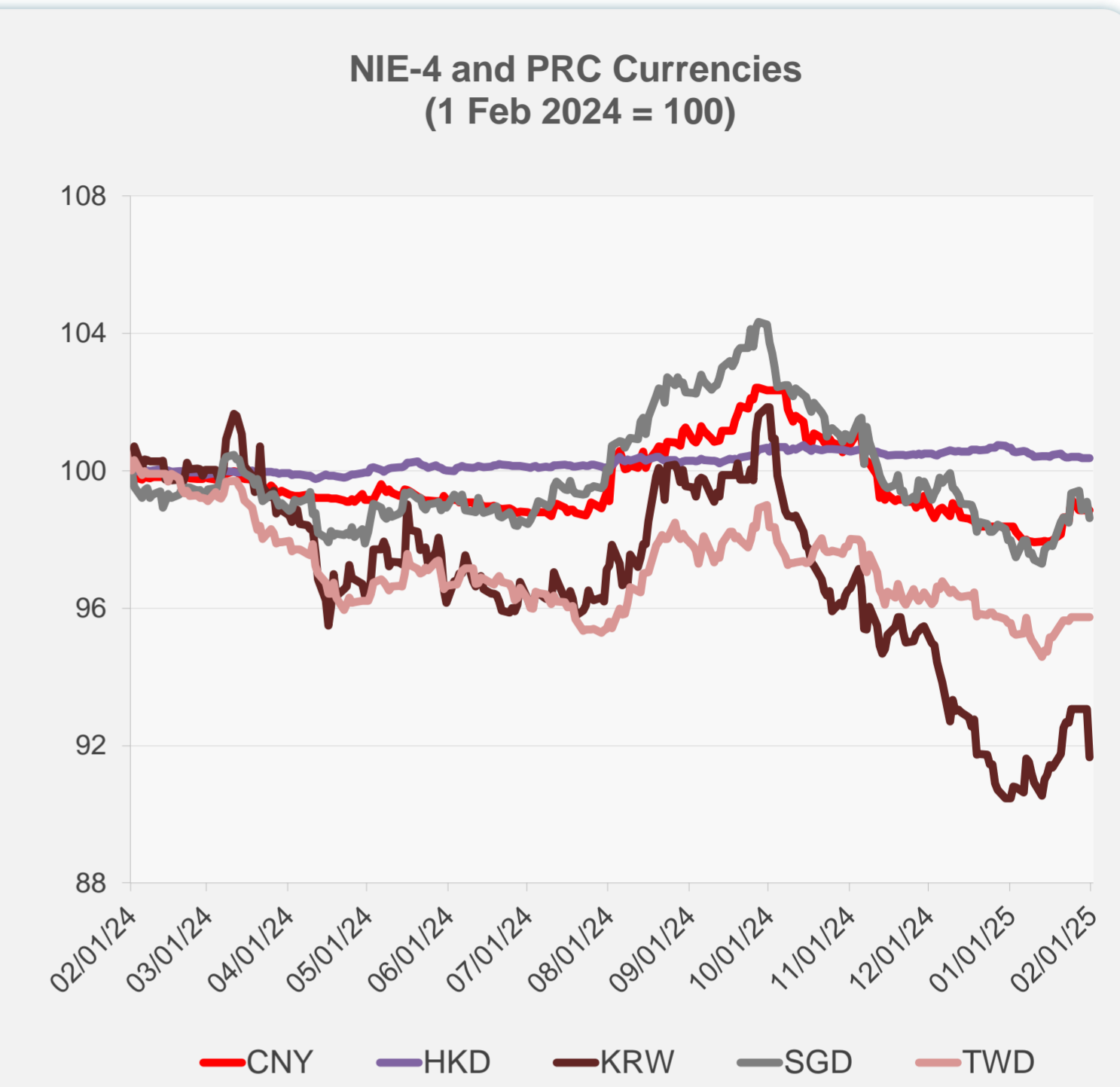
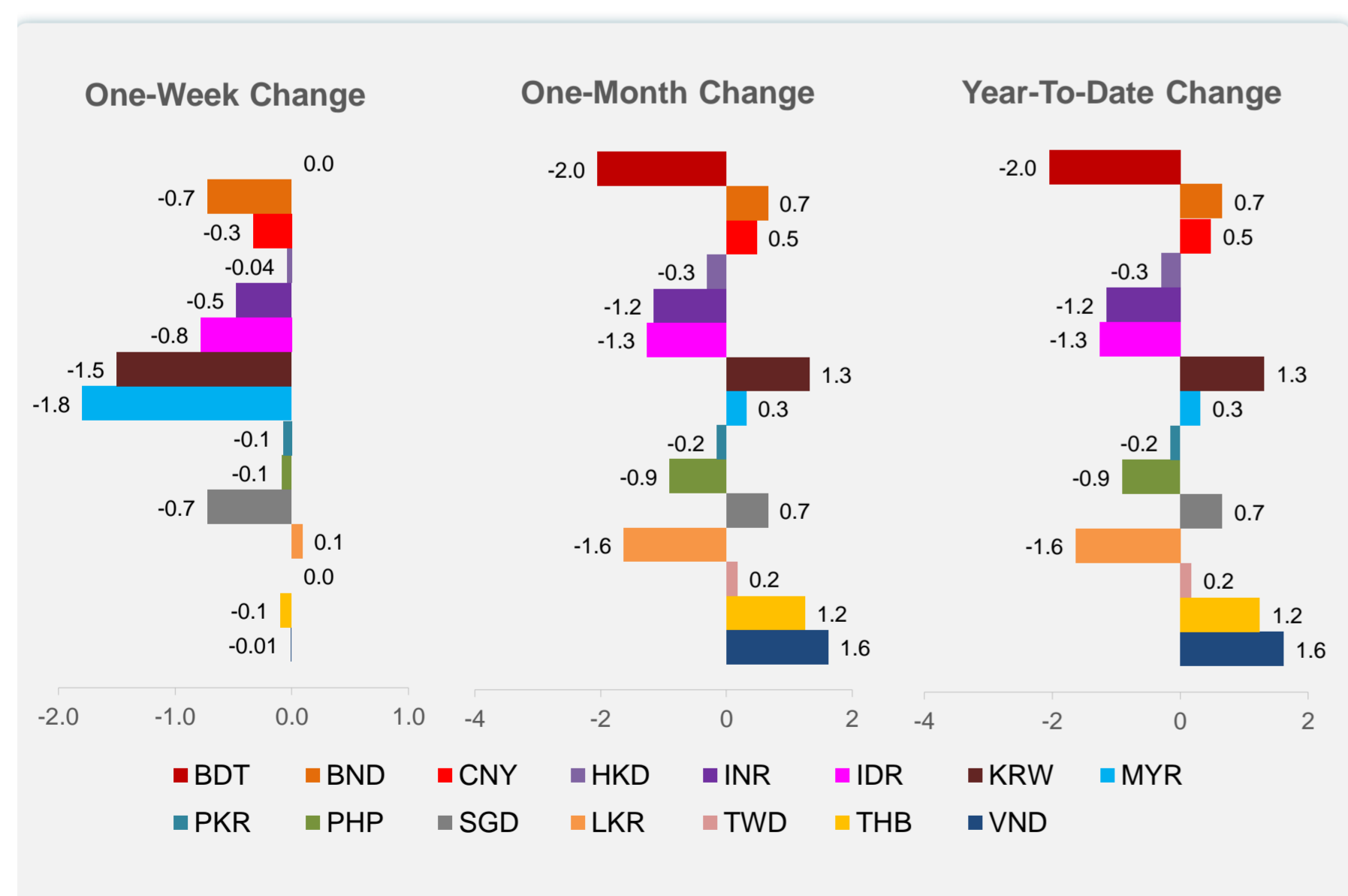
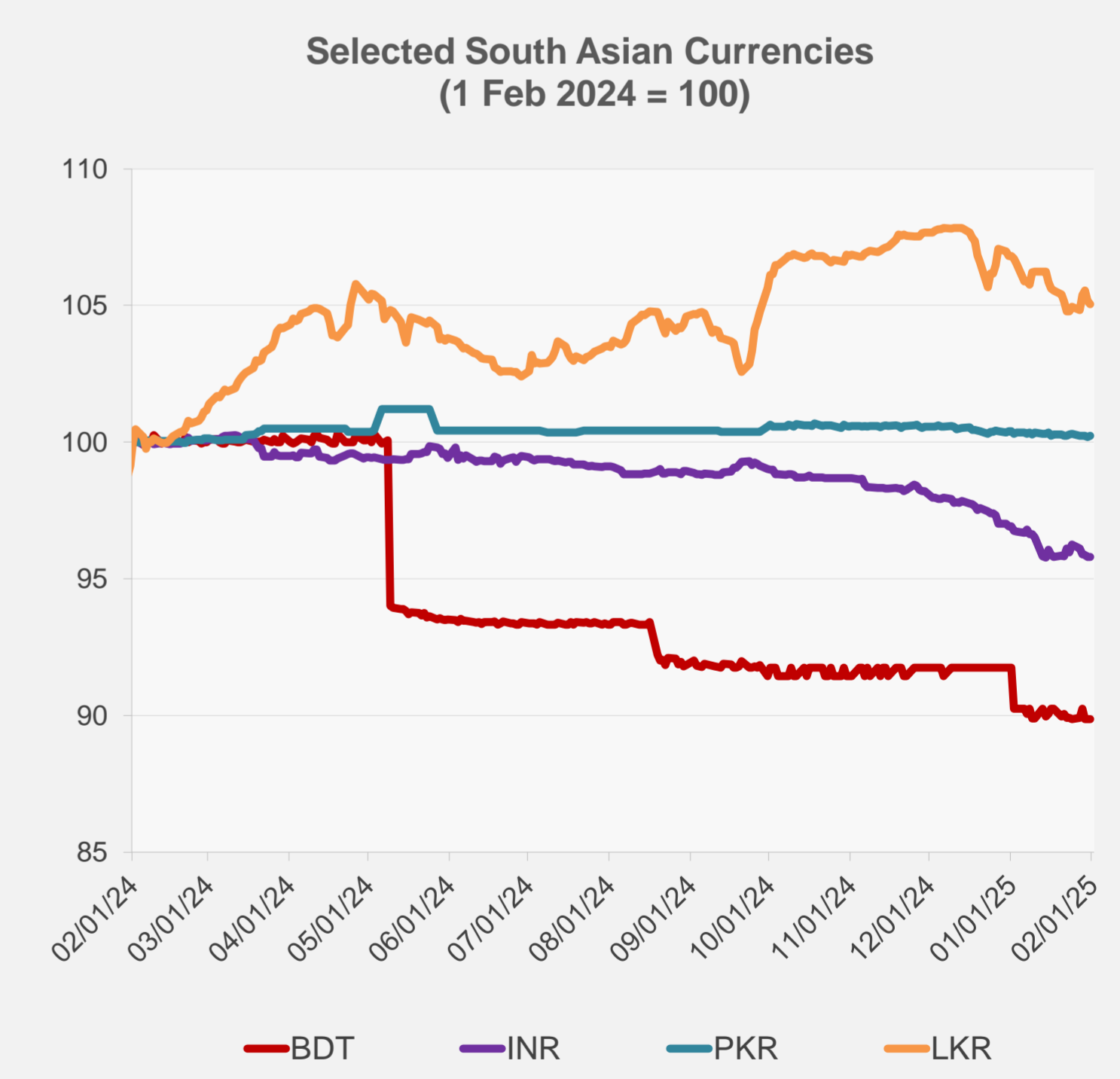
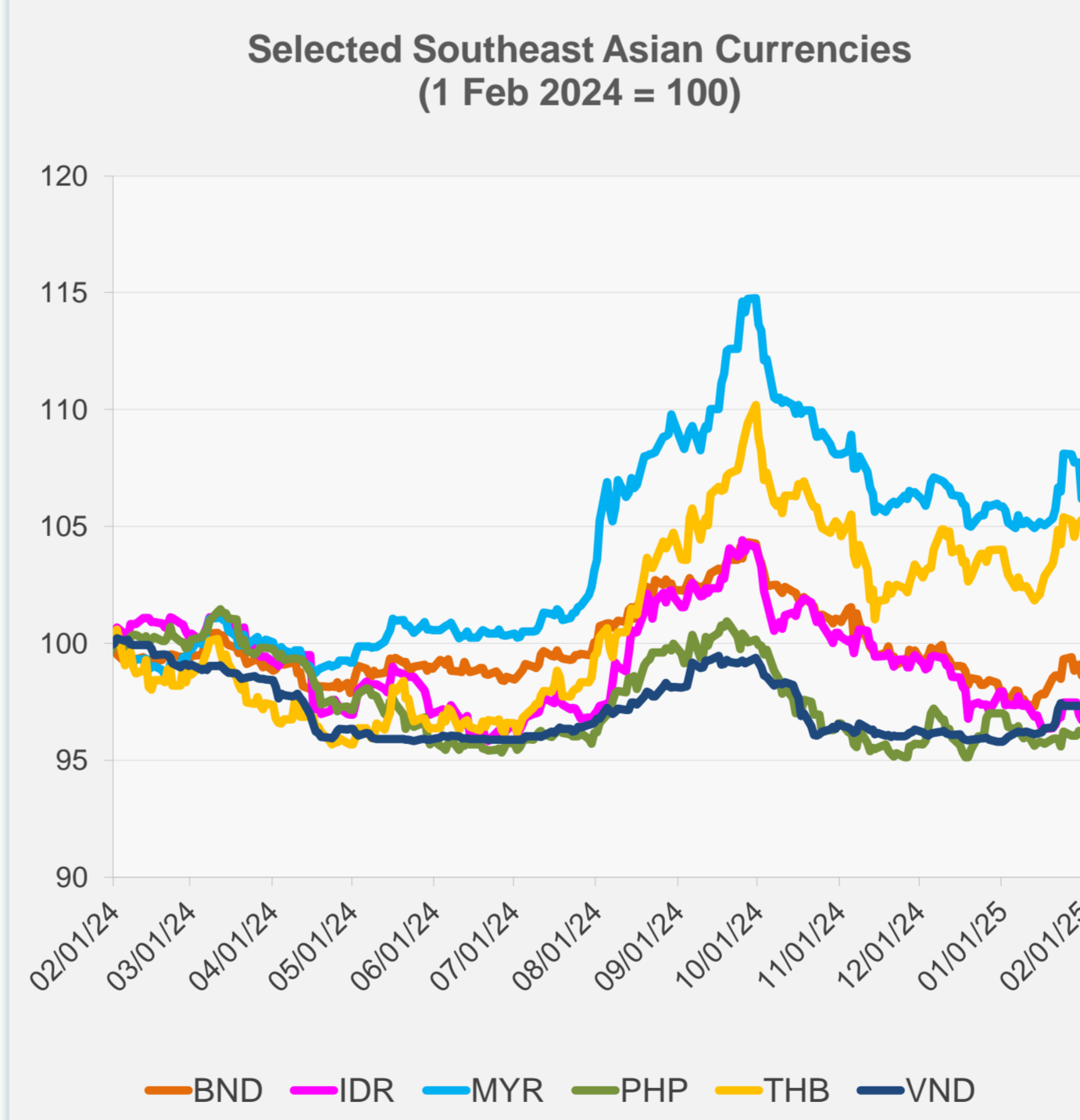


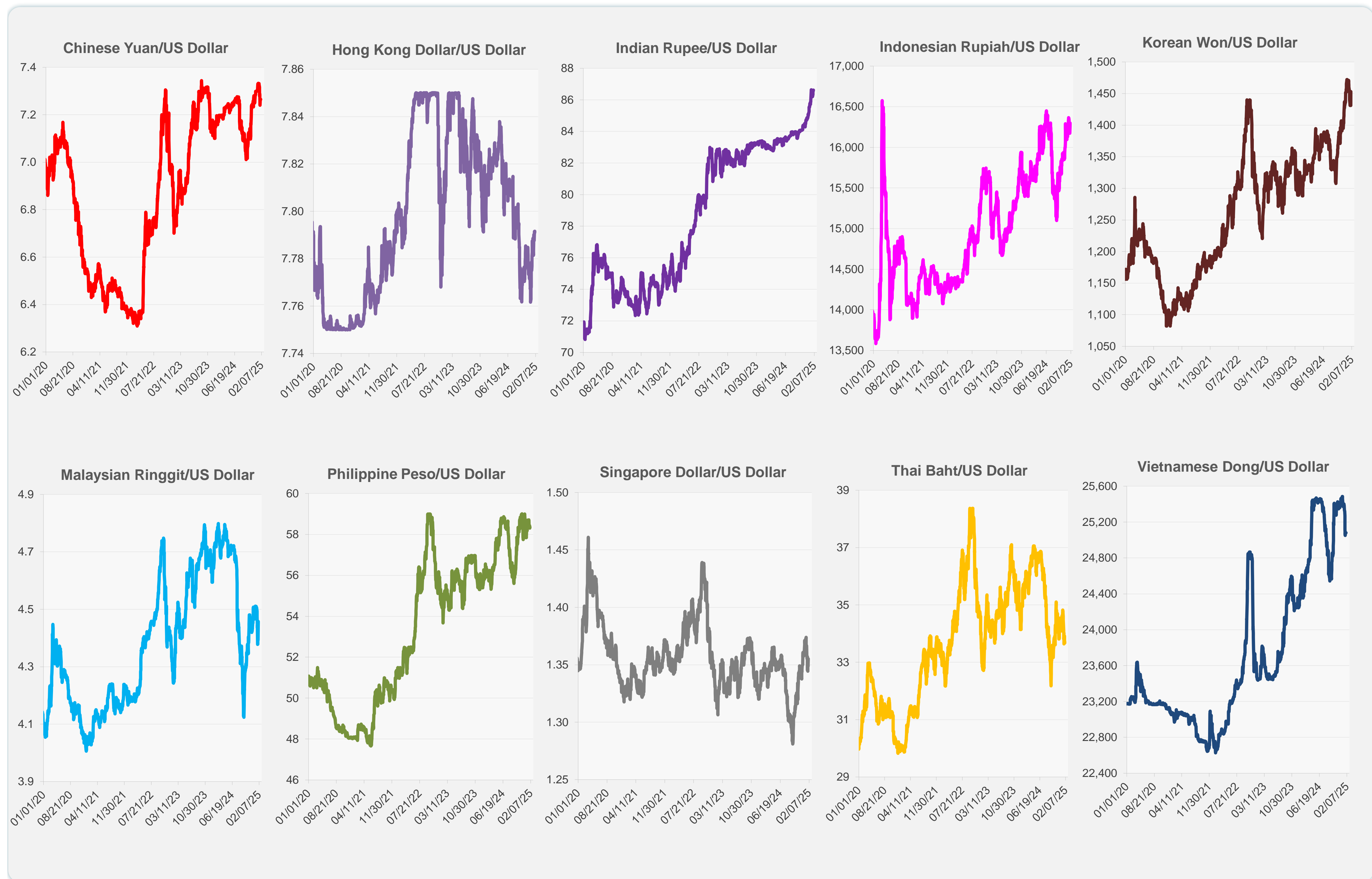
	Latest Closing	% change from Previous Day	% change from 01-Jan-25
Euro	0.96	-0.34	0.40
Japanese yen (JPY)	154.85	-0.46	1.49
Bangladeshi taka (BDT)	122.00	0.00	-2.05
Brunei dollar (BND)	1.36	-0.48	0.66
Chinese yuan (CNY)	7.26	0.00	0.48
Hong Kong dollar (HKD)	7.79	-0.01	-0.30
Indian rupee (INR)	86.62	0.01	-1.16
Indonesian rupiah (IDR)	16,300.00	-0.25	-1.26
Korean won (KRW)	1,453.00	-1.50	1.32
Malaysian ringgit (MYR)	4.46	-1.45	0.31
Pakistan rupee (PKR)	278.80	0.05	-0.15
Philippine peso (PHP)	58.37	-0.13	-0.90
Singapore dollar (SGD)	1.36	-0.48	0.66
Sri Lanka rupee (LKR)	297.87	-0.11	-1.63
Taipei,China NT dollar (TWD)	32.73	0.00	0.17
Thai baht (THB)	33.68	0.16	1.25
Vietnamese dong (VND)	25,080.00	-0.01	1.61



NIE = Newly Industrialized Economies



Note: Negative/Decreasing values indicate depreciation of local currency, and positive/increasing values indicate appreciation.
Source: ADB calculations using data from Haver Analytics.

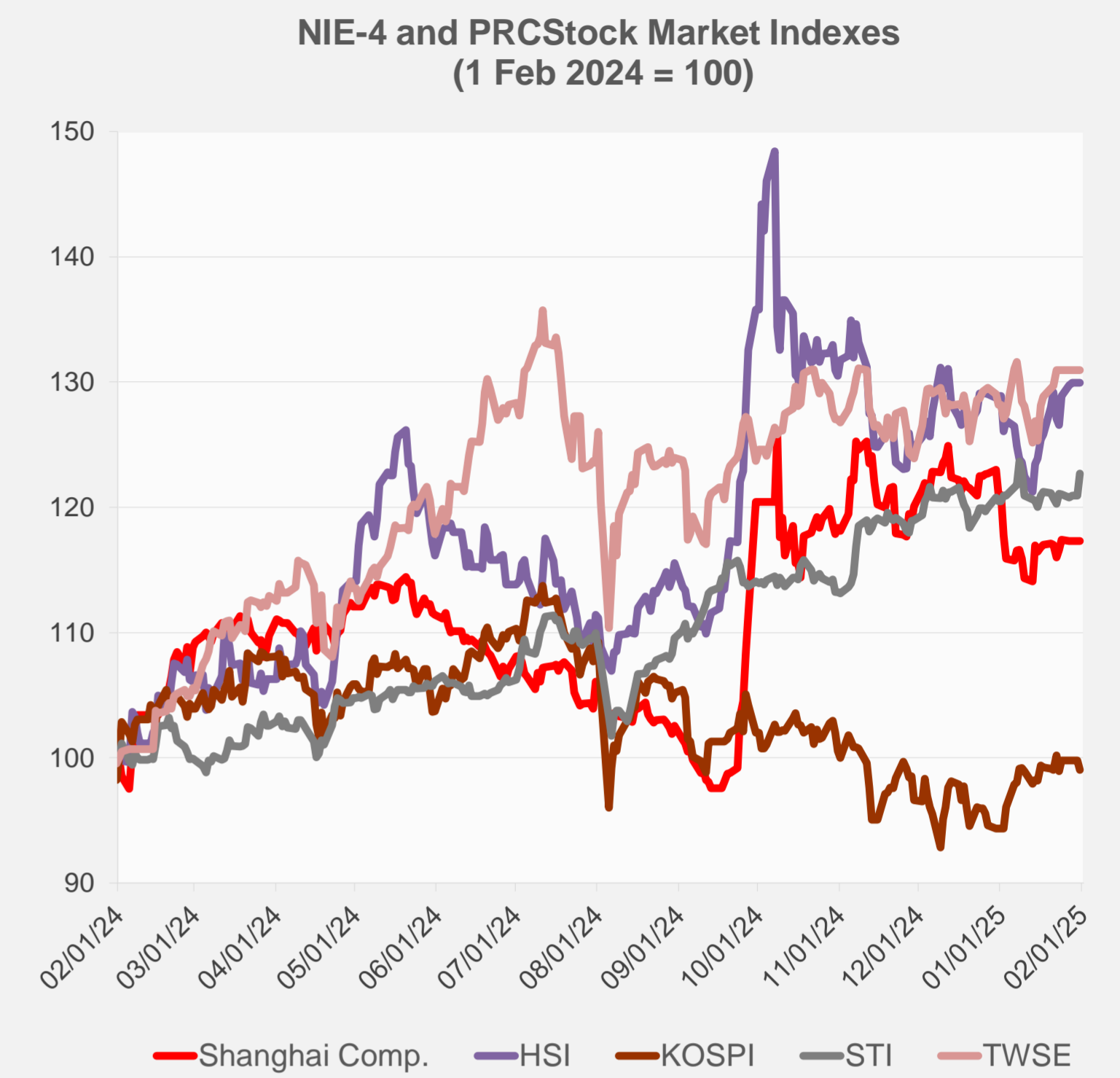
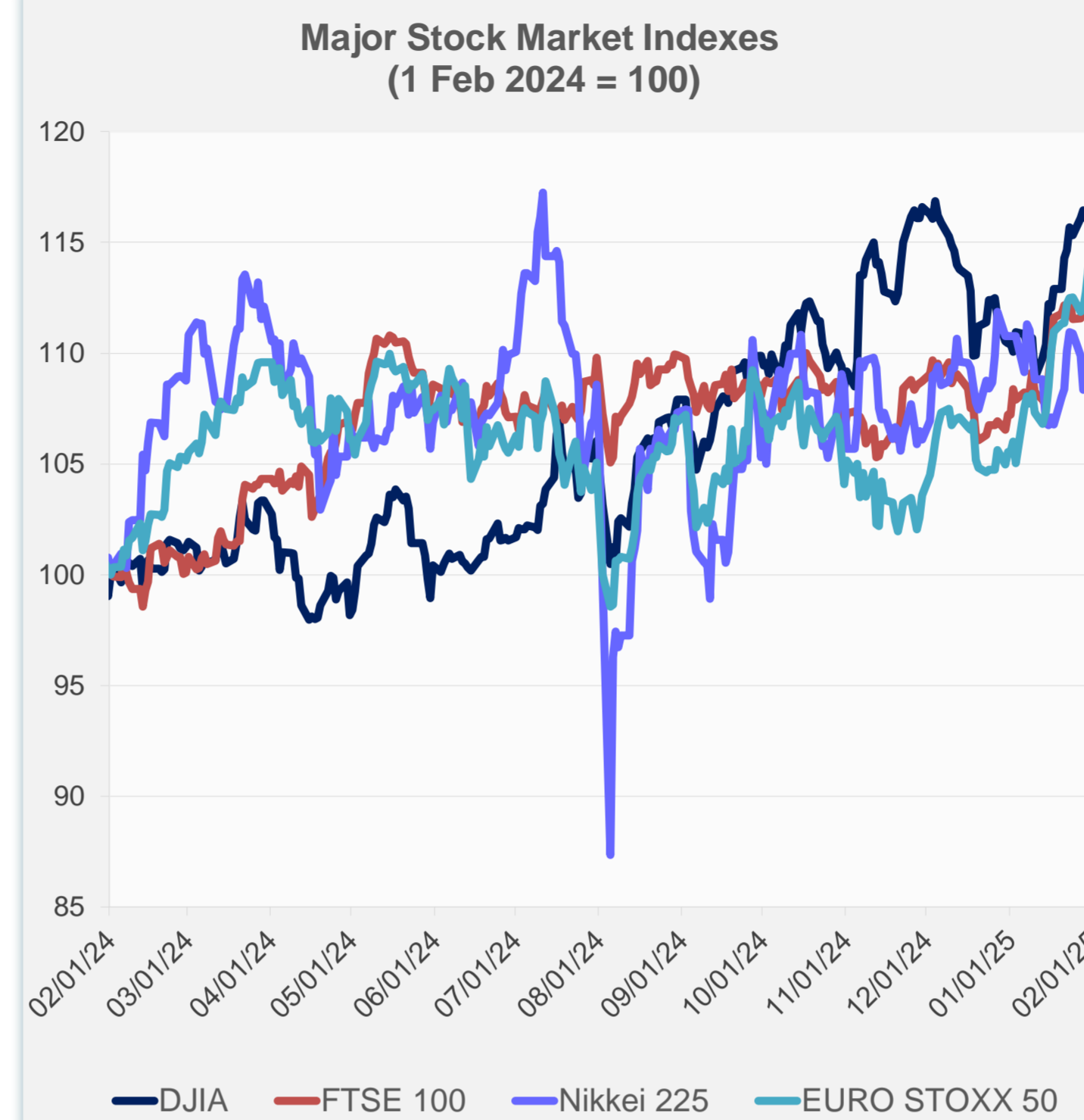


Source: Haver Analytics.

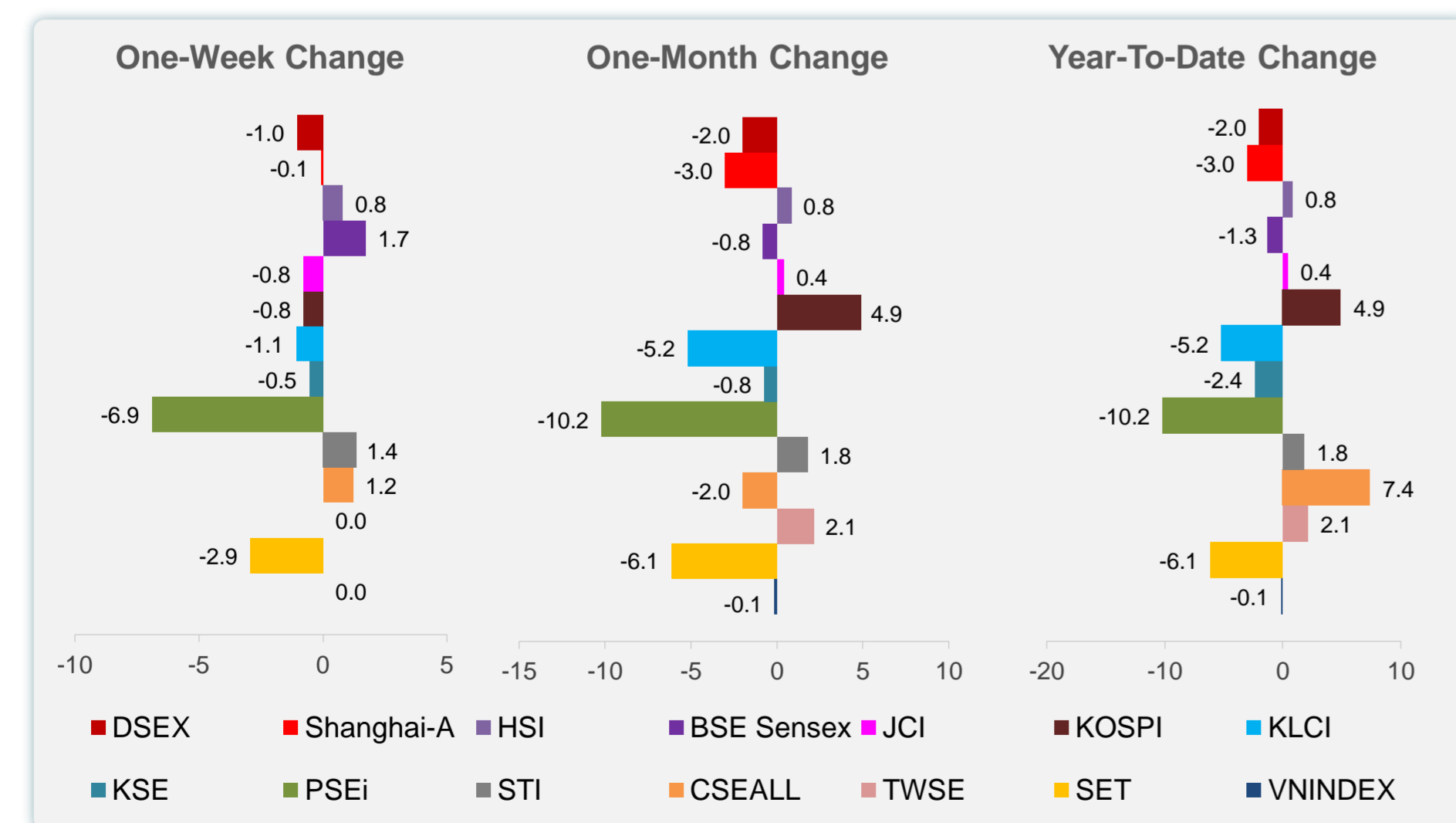
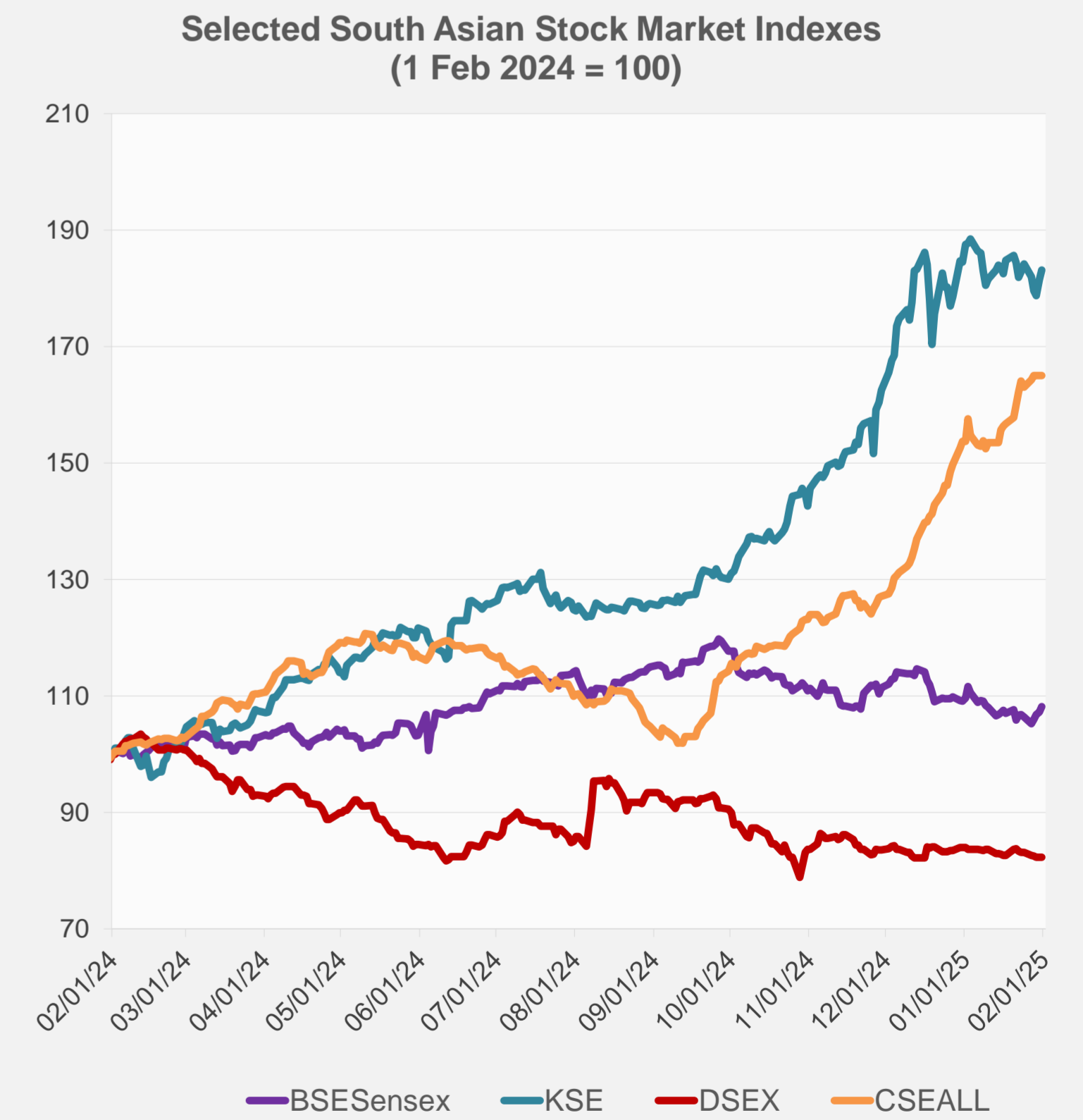
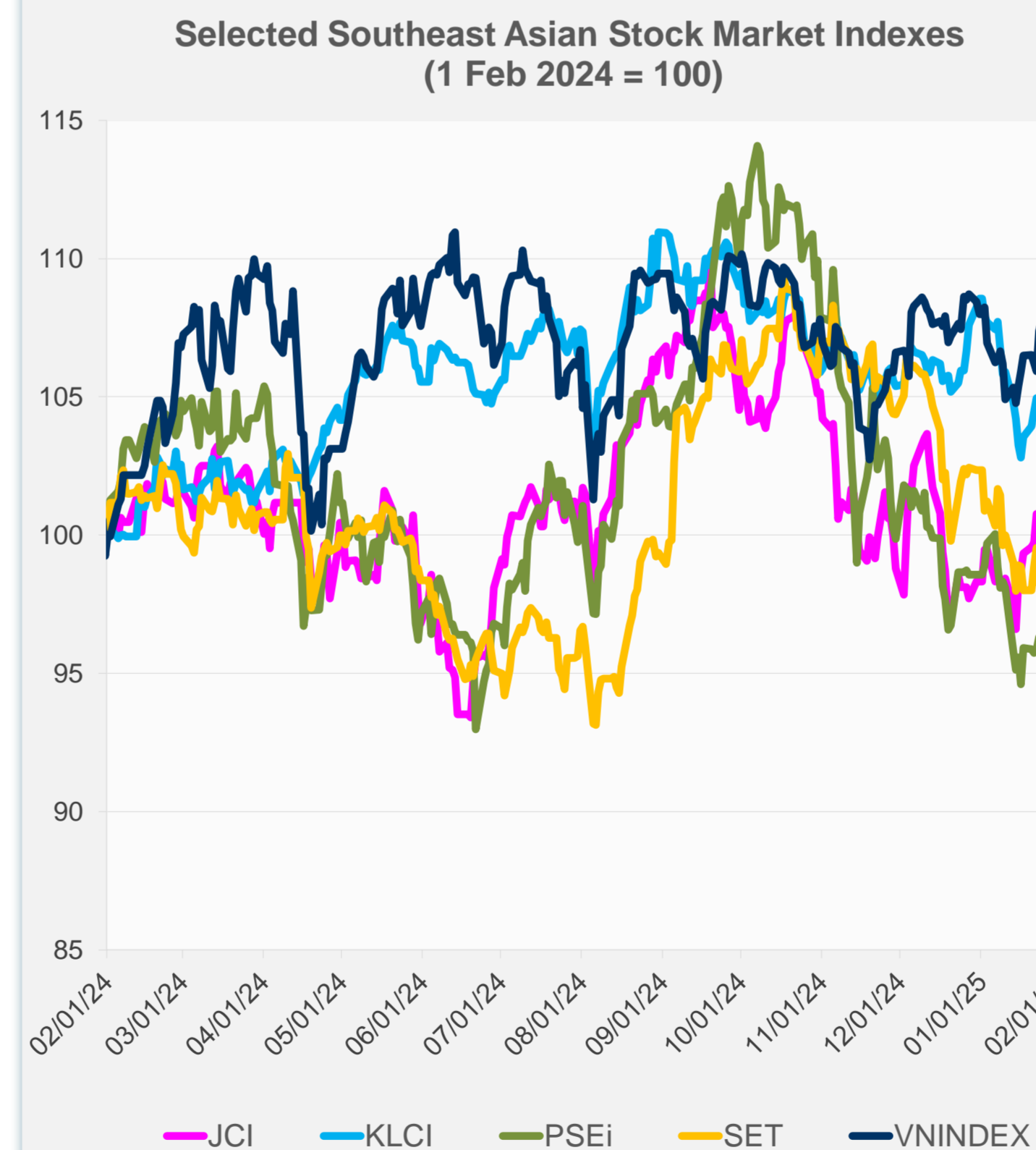
Daily Market Watch
STOCK INDEXES

3 February 2025, 9:00 AM Manila

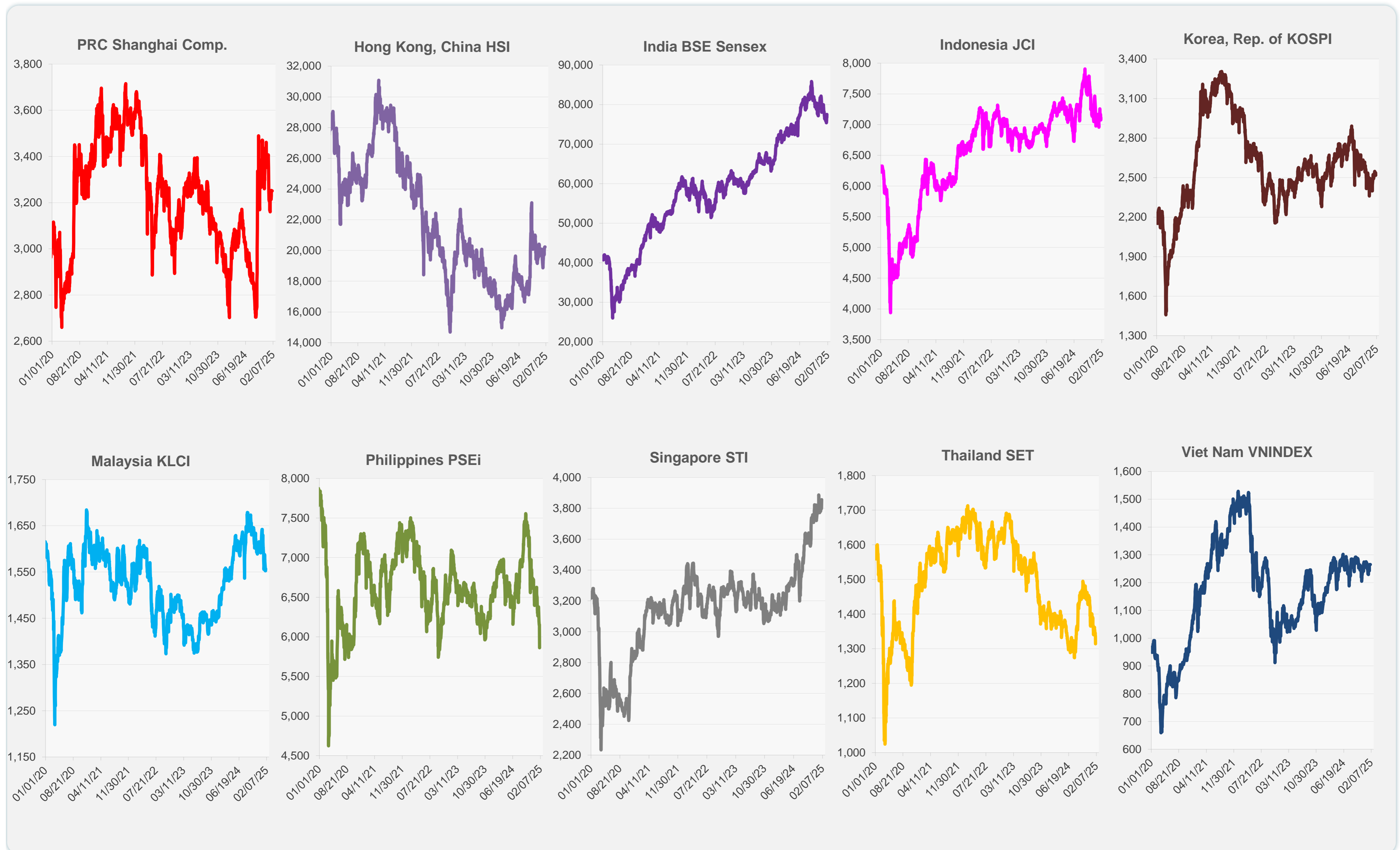
	Latest Closing	% change from Previous Day	% change from 01-Jan-25
US Dow Jones Ind Avg	44,544.66	-0.75	4.70
US NASDAQ	19,627.44	-0.28	1.64
US S&P 500	6,040.53	-0.50	2.70
UK FTSE 100	8,673.96	0.31	6.13
EURO STOXX 50	5,286.87	0.09	7.98
Japan NIKKEI 225	39,572.49	0.15	-0.81
Bangladesh DSEX	5,112.90	0.00	-2.02
PRC Shanghai Comp.	3,250.60	0.00	-3.02
Hong Kong, China HSI	20,225.11	0.00	0.82
India BSE Sensex	77,500.57	0.97	-1.28
Indonesia JCI	7,109.20	0.50	0.41
Korea, Rep. of KOSPI	2,517.37	-0.77	4.91
Malaysia KLCI	1,556.92	0.27	-5.20
Pakistan KSE 100	114,255.72	0.93	-2.35
Philippines PSEi	5,862.59	-4.01	-10.20
Singapore STI	3,855.82	1.44	1.80
Sri Lanka CSEALL	17,122.73	0.04	7.39
Taipei, China TWSE	23,525.41	0.00	2.13
Thailand SET	1,314.50	-1.58	-6.12
Viet Nam VNINDEX	1,265.05	0.00	-0.14



NIE = Newly Industrialized Economies



Sources: ADB calculations using data from CEIC Data Company and Haver Analytics.

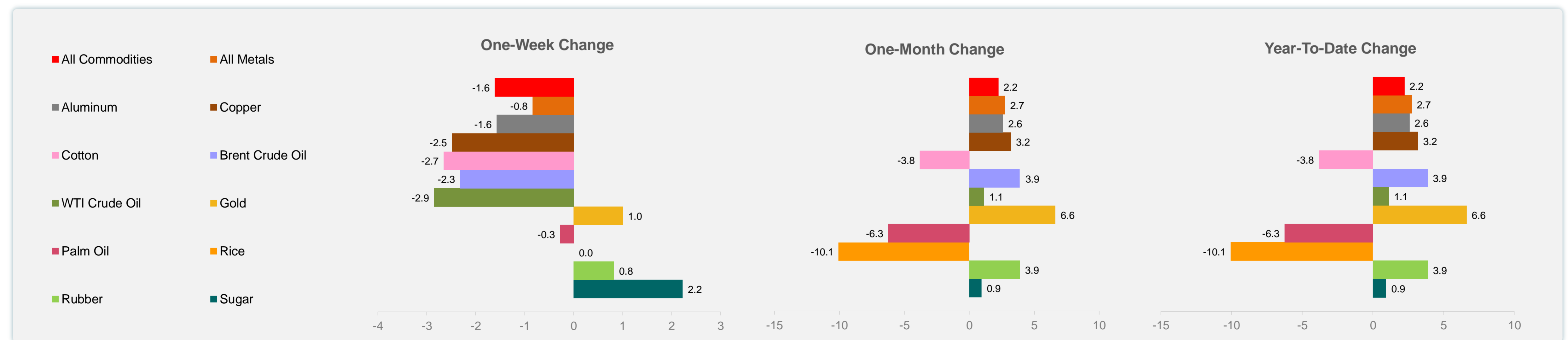
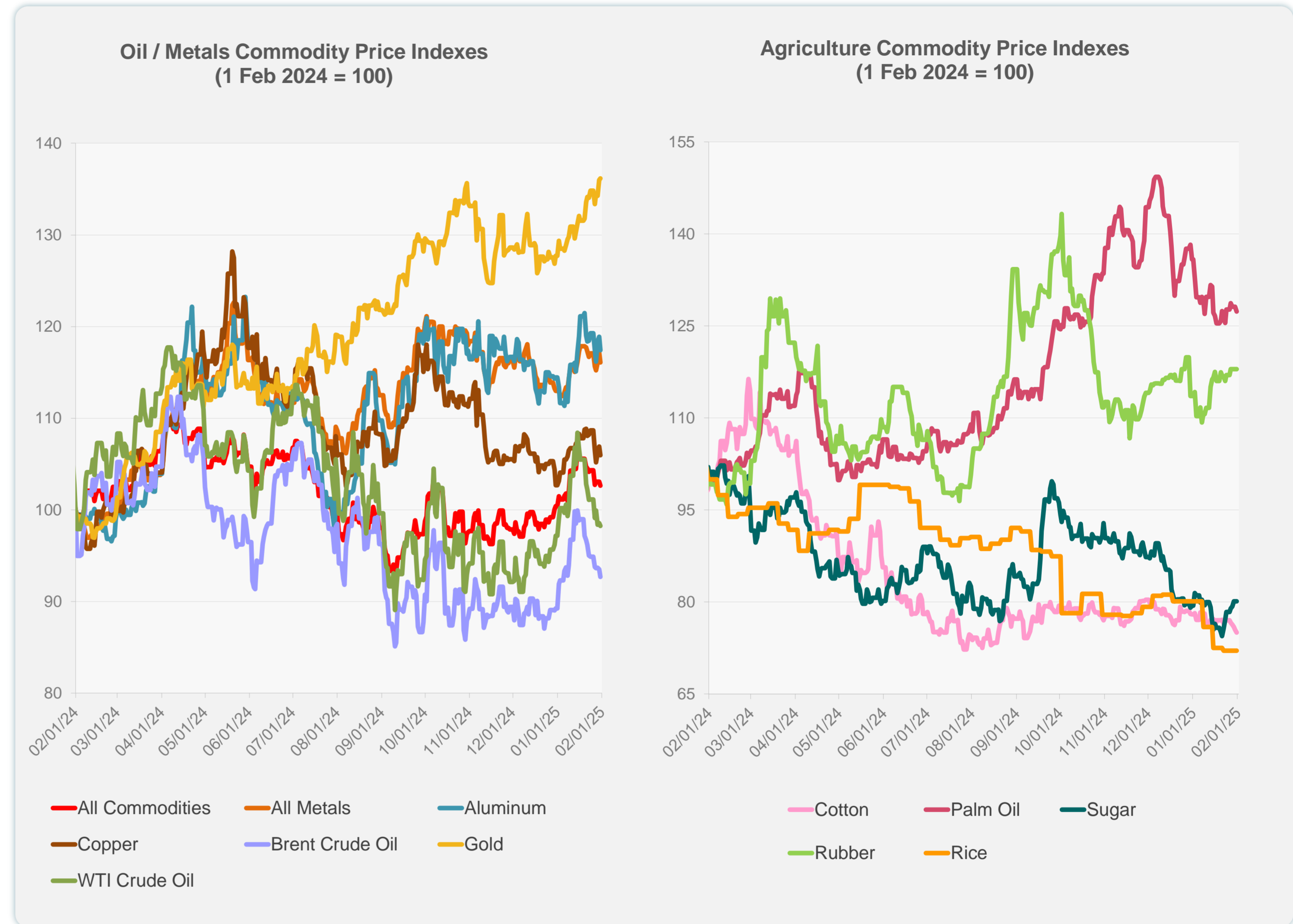


Sources: CEIC Data Company and Haver Analytics.

Daily Market Watch
COMMODITY PRICES

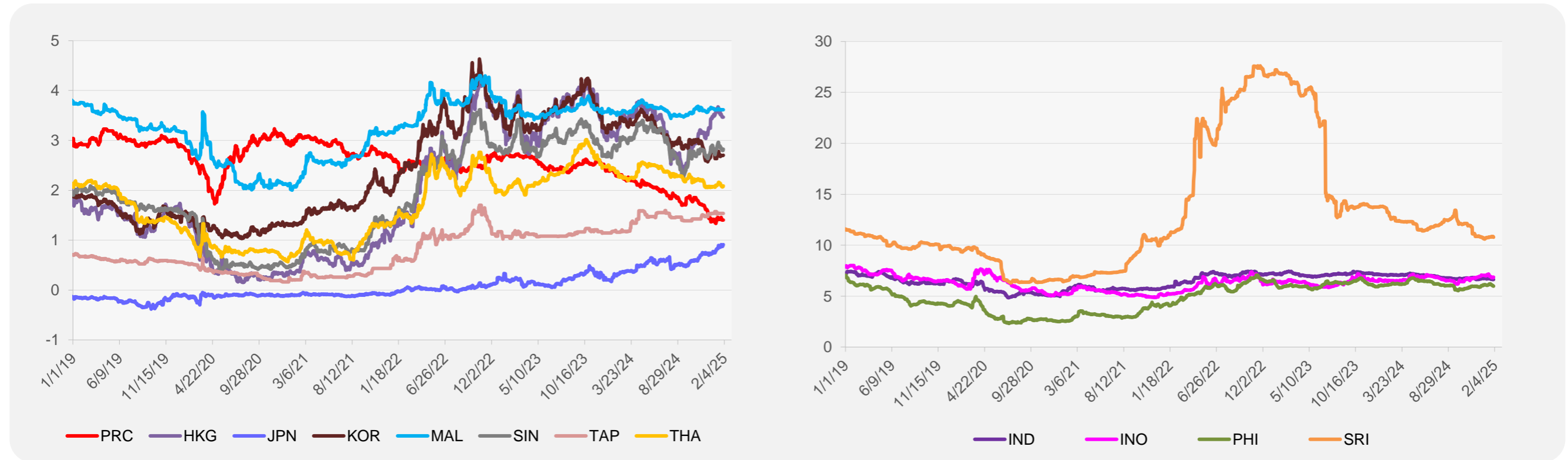
	Unit	Latest Closing	% change from Previous Day	% change from 01-Jan-25
S&P All Commodities	US\$	561.92	-0.44	2.23
S&P All Metals	US\$	315.81	-0.90	2.74
Aluminum	US\$/metric ton	2,592.24	-1.24	2.59
Copper	US\$/metric ton	8,928.47	-0.89	3.19
Cotton	US cents/lb	63.38	-0.61	-3.82
Brent Crude Oil	US\$/barrel	76.98	-0.87	3.88
WTI Crude Oil	US\$/barrel	72.53	-0.27	1.13
Gold	US\$/troy oz	2,798.41	0.14	6.63
Palm Oil	US\$/metric tonne	1,031.34	-0.61	-6.25
Rice ¹	US\$/metric ton	483.00	0.00	-10.06
Rubber ²	US\$/kg	246.00	0.00	3.89
Sugar	US cents/lb	18.37	0.00	0.93

¹ Latest closing price from 22 January 2025.
² Singapore Exchange, Ribbed Smoked Sheet Rubber.

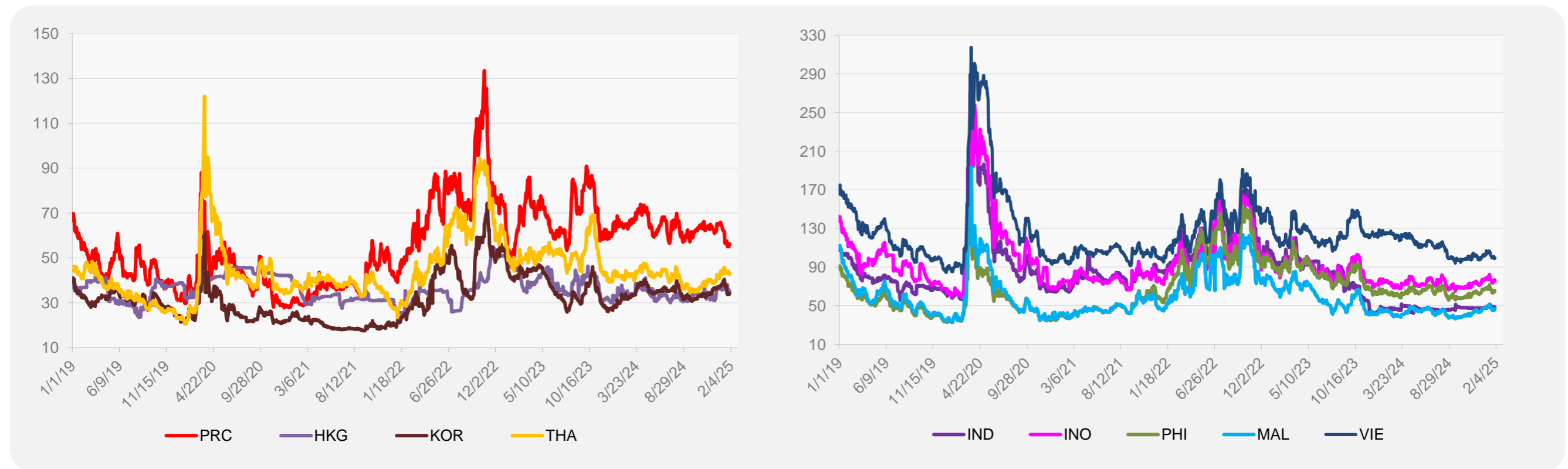


Source: ADB calculations using data from Bloomberg.

5-YEAR LOCAL CURRENCY GOVERNMENT BOND YIELDS (%)



5-YEAR CREDIT DEFAULT SWAP¹



¹ In USD and based on sovereign bonds.
Source: ADB calculations using data from Bloomberg.